

\$1,888,888 - 161 Glyde Park, Rural Rocky View County

MLS® #A2253181

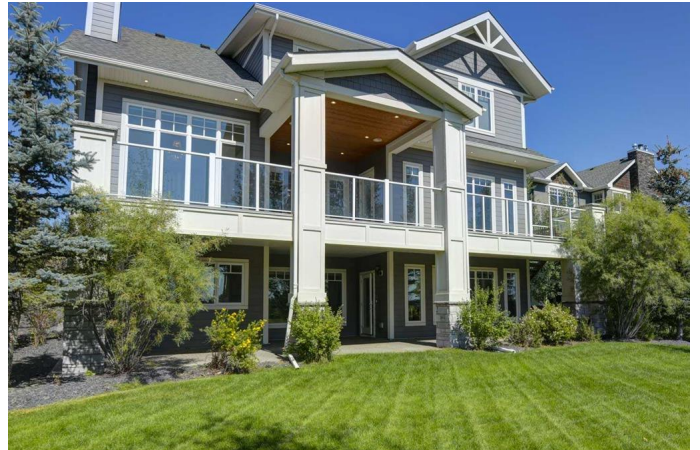
\$1,888,888

6 Bedroom, 5.00 Bathroom, 3,909 sqft

Residential on 0.25 Acres

Elbow Valley West, Rural Rocky View County,
Alberta

Set in prestigious Elbow Valley West, this award-winning residence blends timeless design with modern luxury. This former SAM (BILD) Home of the Year offers over 3,909 sq ft above grade plus a fully developed 1,852 sq ft walkout, all set against a backdrop of panoramic west mountain views. Striking curb appeal introduces a residence filled with architectural detail, from crown mouldings & recessed ceilings to wainscoting & custom lighting. A grand open-to-above foyer makes a memorable first impression leading into the heart of the home. Grand 10' ceilings & expansive windows flood the main level with natural light while engineered hardwood flows throughout. The site-built kitchen is a culinary masterpiece with high-end Monogram appliances, a commercial gas stove, 3 ovens, oversized fridge, 2 beverage fridges, a butler's pantry & an oversized stone island designed for gathering. The adjacent nook wrapped in windows offers a peaceful start to the day while the central dining room easily accommodates a large table for entertaining. A vaulted living room with oversized windows frames stunning views & a gas fireplace provides cozy ambience. Patio doors extend living outside to a massive wraparound west deck perfect for summer evenings & weekend barbeques. A private main floor office allows quiet productivity while the mudroom with built-ins adds everyday convenience. Upstairs, the primary retreat is a luxurious escape



featuring a custom walk-in closet, built-ins, & a window seat overlooking the Rockies. The spa-inspired ensuite boasts dual vanities, a deep soaker tub & an indulgent rain shower. 3 additional bedrooms include 1 with a private ensuite, while a 5 piece main bath ensures no competition for sinks. A spacious bonus room provides the perfect gathering space for family movie nights or quiet relaxation, while the conveniently located upper laundry adds everyday ease by eliminating trips up & down the stairs. The walkout basement expands the lifestyle with a large rec room anchored by a projection theatre & a 2nd projector in a dedicated media space. A full wet bar makes entertaining seamless while a mirrored gym with French doors adds versatility. 2 more bedrooms & a full bath complete this level. Step outside to a covered lower patio & expansive yard bordered by trees & no rear neighbours for ultimate privacy. Premium upgrades include custom Elite blinds, updated surround sound throughout, in-floor heating, cedar sauna, air conditioning, air purifier, water softener & abundant storage. Vehicle enthusiasts will love the oversized heated triple garage with epoxy floors & a tire lift plus a pet sink for convenience. Low monthly condo fees cover snow removal & grounds maintenance, making this property ideal for a lock-and-leave lifestyle. Located moments from Elbow Valley Lake & Fisherman's Lake, with quick access to Glencoe Golf, Aspen Woods, downtown & Bragg Creek, this home combines elegance, comfort & a truly unbeatable setting!

Built in 2017

Essential Information

MLS® #	A2253181
Price	\$1,888,888
Bedrooms	6

Bathrooms	5.00
Full Baths	4
Half Baths	1
Square Footage	3,909
Acres	0.25
Year Built	2017
Type	Residential
Sub-Type	Detached
Style	2 Storey
Status	Active

Community Information

Address	161 Glyde Park
Subdivision	Elbow Valley West
City	Rural Rocky View County
County	Rocky View County
Province	Alberta
Postal Code	T3Z 0A1

Amenities

Amenities	Playground, Snow Removal
Parking Spaces	6
Parking	Heated Garage, Insulated, Oversized, Triple Garage Attached
# of Garages	3

Interior

Interior Features	Breakfast Bar, Built-in Features, Chandelier, Closet Organizers, Crown Molding, Double Vanity, High Ceilings, Kitchen Island, Open Floorplan, Pantry, Recessed Lighting, Soaking Tub, Stone Counters, Storage, Vaulted Ceiling(s), Walk-In Closet(s), Wet Bar, Wired for Sound, French Door
Appliances	Built-In Oven, Central Air Conditioner, Dishwasher, Dryer, Garage Control(s), Gas Stove, Microwave, Range Hood, Refrigerator, Window Coverings, Water Softener
Heating	Forced Air, In Floor
Cooling	Central Air
Fireplace	Yes
# of Fireplaces	1
Fireplaces	Gas, Living Room

Has Basement	Yes
Basement	Finished, Full, Walk-Out

Exterior

Exterior Features	BBQ gas line, Lighting, Private Yard
Lot Description	Back Yard, Backs on to Park/Green Space, Front Yard, Landscaped, Lawn, Many Trees, Pie Shaped Lot, Private, Views
Roof	Asphalt Shingle
Construction	Composite Siding, Stone, Wood Frame
Foundation	Poured Concrete

Additional Information

Date Listed	September 2nd, 2025
Days on Market	4
Zoning	R-1

Listing Details

Listing Office	Royal LePage Blue Sky
----------------	-----------------------

Data is supplied by Pillar 9â„¢ MLS® System. Pillar 9â„¢ is the owner of the copyright in its MLS® System. Data is deemed reliable but is not guaranteed accurate by Pillar 9â„¢. The trademarks MLS®, Multiple Listing Service® and the associated logos are owned by The Canadian Real Estate Association (CREA) and identify the quality of services provided by real estate professionals who are members of CREA. Used under license.