

\$1,349,900 - 1731 46 Avenue Sw, Calgary

MLS® #A2235858

\$1,349,900

3 Bedroom, 2.00 Bathroom, 1,380 sqft

Residential on 0.14 Acres

Altadore, Calgary, Alberta

Attention builders renovators prime location on super quiet wide street. SOUTH BACKYARD middle of the block , one block to park, walk to River Park and Glenmore Athletic Park.

Beautiful open floor plan, two large bedrooms up one down. Two fireplaces. Features an oversized 24x22 garage.

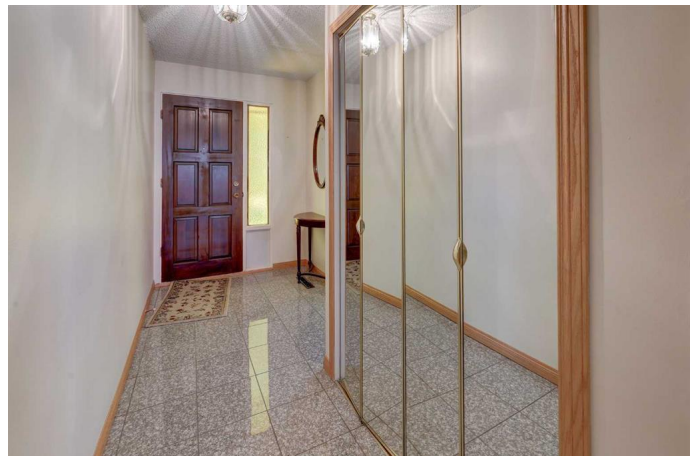
Built in 1953

Essential Information

MLS® #	A2235858
Price	\$1,349,900
Bedrooms	3
Bathrooms	2.00
Full Baths	2
Square Footage	1,380
Acres	0.14
Year Built	1953
Type	Residential
Sub-Type	Detached
Style	Bungalow
Status	Active

Community Information

Address	1731 46 Avenue Sw
Subdivision	Altadore
City	Calgary
County	Calgary
Province	Alberta



Postal Code T2T 2R6

Amenities

Parking Spaces 2
Parking Double Garage Detached
of Garages 2

Interior

Interior Features Ceiling Fan(s), See Remarks, Track Lighting
Appliances Dishwasher, Electric Stove, Freezer, Refrigerator, Washer/Dryer, Window Coverings
Heating Forced Air, Natural Gas
Cooling None
Fireplace Yes
of Fireplaces 2
Fireplaces Brick Facing, Family Room, Gas, Living Room, Stone, Wood Burning
Has Basement Yes
Basement Finished, Full

Exterior

Exterior Features Garden, Other, Playground
Lot Description Back Lane, Few Trees, Garden, Landscaped, Lawn, Rectangular Lot
Roof Asphalt Shingle
Construction Stucco, Wood Frame
Foundation Poured Concrete

Additional Information

Date Listed July 2nd, 2025
Days on Market 23
Zoning R-CG

Listing Details

Listing Office RE/MAX House of Real Estate

Data is supplied by Pillar 9â„¢ MLS® System. Pillar 9â„¢ is the owner of the copyright in its MLS® System. Data is deemed reliable but is not guaranteed accurate by Pillar 9â„¢. The trademarks MLS®, Multiple Listing Service® and the associated logos are owned by The Canadian Real Estate Association (CREA) and identify the quality of services provided by real estate professionals who are members of CREA. Used under license.