

\$719,900 - 282 Somerside Park Sw, Calgary

MLS® #A2214115

\$719,900

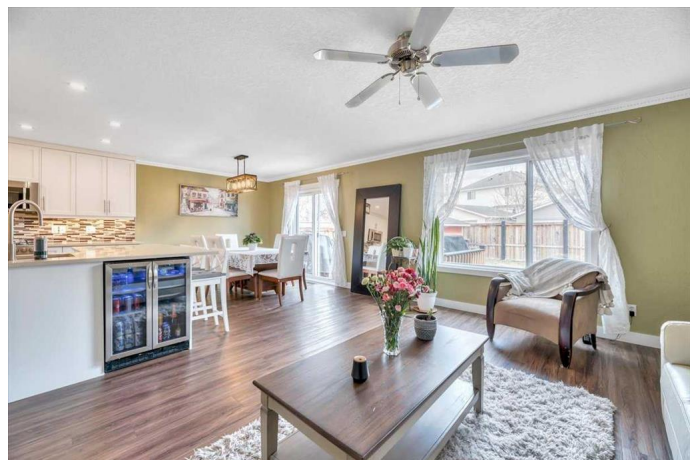
4 Bedroom, 4.00 Bathroom, 1,914 sqft
Residential on 0.09 Acres

Somerset, Calgary, Alberta

This is an exceptionally maintained family-ready home, on a quiet street and steps from green spaces. Major upgrades include kitchen renovation, air-conditioning, roofing, siding, and windows.

Right from the cozy front porch and big open entrance you will know this is "the one"™. The spacious and beautifully decorated main floor flows from the living room with warm natural light, to the dining area overlooking the inviting patio, and the show piece kitchen. It features knockdown ceiling texture, full height cabinetry, value added built-in features, quartz countertops with serving counter, decorative backsplash, under cabinet lighting, and a large wine fridge. Also to mention is one of the two front closets is deep enough for seasonal storage. The upper level has a must-see bonus room with sunset views, gas fireplace, and space for any of your needs. The bedrooms are all large enough for queen beds or bigger. The bathrooms are upgraded with tile and modern fixtures. Also check out the walk-in linen-storage closet! On to the basement—there is a third, large family/flex room, and a big 4th bedroom with two windows, dedicated laundry room with cabinets and countertop, and a tucked away 3rd full bathroom. The utility room has ample space for storage and a workbench.

The garage is insulated and finished. The private yard is fenced and comes complete



with a big shed and centre piece firepit. The sought-after alley access makes this lot RV or second garage friendly. This is a low-traffic street with direct access to a soccer field and children's playground. The community has pathways and a spray park and other features. Walking distance are Spruce Meadows and multiple schools. Close by are a major shopping centre, C-Train station, recreation center, and main roads with quick access to downtown and a getaway to the mountains.

Come see this tastefully upgraded home and peaceful location and take advantage of the exceptional value.

Built in 1996

Essential Information

MLS® #	A2214115
Price	\$719,900
Bedrooms	4
Bathrooms	4.00
Full Baths	3
Half Baths	1
Square Footage	1,914
Acres	0.09
Year Built	1996
Type	Residential
Sub-Type	Detached
Style	2 Storey
Status	Active

Community Information

Address	282 Somerside Park Sw
Subdivision	Somerset
City	Calgary
County	Calgary
Province	Alberta
Postal Code	T2Y 3G6

Amenities

Parking Spaces	4
Parking	Alley Access, Double Garage Attached, Driveway, Garage Door Opener, Garage Faces Front, Insulated
# of Garages	2

Interior

Interior Features	Ceiling Fan(s), Chandelier, Closet Organizers, No Smoking Home, Open Floorplan, Quartz Counters, Recessed Lighting, Storage, Vinyl Windows, Walk-In Closet(s)
Appliances	Bar Fridge, Central Air Conditioner, Dishwasher, Dryer, Electric Oven, Garage Control(s), Microwave Hood Fan, Refrigerator, Washer, Window Coverings, Garburator
Heating	High Efficiency, Forced Air, Natural Gas
Cooling	Central Air
Fireplace	Yes
# of Fireplaces	1
Fireplaces	Gas, Mantle, Great Room, Tile, Zero Clearance
Has Basement	Yes
Basement	Finished, Full

Exterior

Exterior Features	BBQ gas line, Fire Pit, Private Yard, Storage
Lot Description	Back Lane, Back Yard, Cul-De-Sac, Front Yard, Landscaped, Private
Roof	Asphalt Shingle
Construction	Vinyl Siding, Wood Frame
Foundation	Poured Concrete

Additional Information

Date Listed	April 24th, 2025
Days on Market	8
Zoning	R-CG

Listing Details

Listing Office	RE/MAX First
----------------	--------------

Data is supplied by Pillar 9â„¢ MLSÂ® System. Pillar 9â„¢ is the owner of the copyright in its MLSÂ® System. Data is deemed reliable but is not guaranteed accurate by Pillar 9â„¢. The trademarks MLSÂ®, Multiple Listing ServiceÂ® and the associated logos are owned by The Canadian Real Estate Association (CREA) and identify the quality of services provided by real estate professionals who are members of CREA. Used under license.