

\$444,900 - 308, 2411 Erlton Road Sw, Calgary

MLS® #A2209520

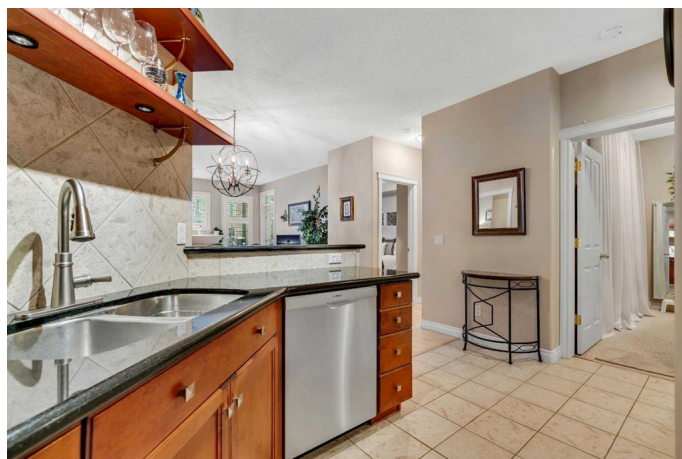
\$444,900

2 Bedroom, 2.00 Bathroom, 1,047 sqft

Residential on 0.00 Acres

Erlton, Calgary, Alberta

Welcome to 2411 Erlton Road SW. A stunning west-facing condo in the desirable Waterford of Erlton, this rare gem offers views and a prime inner-city location just steps from the scenic Bow River pathways. This beautifully maintained 2-bedroom, 2-bathroom + den unit features a functional, open-concept layout with generous room sizes. The living space is anchored by a charming feature fireplace and flows effortlessly into a casual dining area. The freshly updated kitchen is a showstopper, boasting full-height cabinetry, a brand-new stainless steel appliance package including an induction cooktop, an extended eating bar, and ample counter and storage space – perfect for both everyday living and entertaining. The spacious primary suite is a true retreat, offering a walk-in closet and private 4-piece ensuite with a relaxing corner soaker tub and separate shower. A second bedroom and full 3-piece bath are thoughtfully positioned for guest comfort. Tucked just off the foyer, the den provides a quiet space for a home office or reading nook. Additional upgrades include fresh paint throughout, California shutters, in-suite laundry, and a serene west-facing balcony complete with a BBQ gas line – ideal for enjoying summer evenings without any unsightly views. The unit also features a courtyard views, one titled, secured underground parking stall with attached storage. Residents of Waterford enjoy access to premium amenities including a recreation/party room, on-site car wash, and



secure bike storage. Located in one of Calgary’s most connected communities, you’re just steps to the Elbow River pathway system, the MNP Community & Sport Centre, Stampede Park, and within walking distance to LRT, downtown, schools, and vibrant 4th Street shopping and dining.

Built in 2000

Essential Information

MLS® #	A2209520
Price	\$444,900
Bedrooms	2
Bathrooms	2.00
Full Baths	2
Square Footage	1,047
Acres	0.00
Year Built	2000
Type	Residential
Sub-Type	Apartment
Style	Single Level Unit
Status	Active

Community Information

Address	308, 2411 Erlton Road Sw
Subdivision	Erlton
City	Calgary
County	Calgary
Province	Alberta
Postal Code	T2S 3B9

Amenities

Amenities	Bicycle Storage, Elevator(s), Recreation Room, Secured Parking, Snow Removal, Storage, Trash, Visitor Parking, Car Wash
Parking Spaces	1
Parking	Heated Garage, Stall, Underground, Secured

Interior

Interior Features	Breakfast Bar, Ceiling Fan(s), Closet Organizers, High Ceilings, Open Floorplan, Soaking Tub, Walk-In Closet(s)
Appliances	Dishwasher, Dryer, Electric Stove, Microwave Hood Fan, Refrigerator, Washer, Window Coverings
Heating	Baseboard
Cooling	None
Fireplace	Yes
# of Fireplaces	1
Fireplaces	Gas
# of Stories	5

Exterior

Exterior Features	Balcony
Construction	Stone, Stucco, Wood Frame

Additional Information

Date Listed	April 11th, 2025
Days on Market	21
Zoning	M-C2

Listing Details

Listing Office	RE/MAX First
----------------	--------------

Data is supplied by Pillar 9â„¢ MLSÂ® System. Pillar 9â„¢ is the owner of the copyright in its MLSÂ® System. Data is deemed reliable but is not guaranteed accurate by Pillar 9â„¢. The trademarks MLSÂ®, Multiple Listing ServiceÂ® and the associated logos are owned by The Canadian Real Estate Association (CREA) and identify the quality of services provided by real estate professionals who are members of CREA. Used under license.